



Child Care Search and Decision-Making among Hispanic Families: New Findings and New Horizons

August 11, 2015

#HispanicECE

Welcome

Co-Chairs:

Michael López, Ph.D. &
Erin Bumgarner, Ph.D.,
Abt Associates



Presenters:

Yoonsook Ha
Boston University



Colleen Vesely, Ph.D.
George Mason University



Disclaimer



The views expressed in this presentation do not necessarily reflect the views or policies of the Office of Planning, Research and Evaluation, the Administration for Children and Families, or the U.S. Department of Health and Human Services.



Center Mission and Objectives

Mission: A hub of research to help programs and policy better serve low-income Hispanics across three priority areas:

- Poverty reduction and economic self-sufficiency
- Healthy marriage and responsible fatherhood
- Early care and education

Primary Objectives:

1. Conduct Research
2. Build Capacity
3. Communication and Dissemination

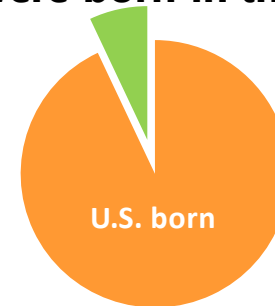


Motivation for Today's Presentation

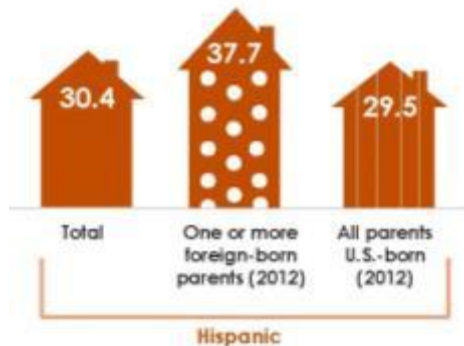
1 in 4 of all U.S. children are Hispanic



Over 90% of Hispanic children were born in the U.S.



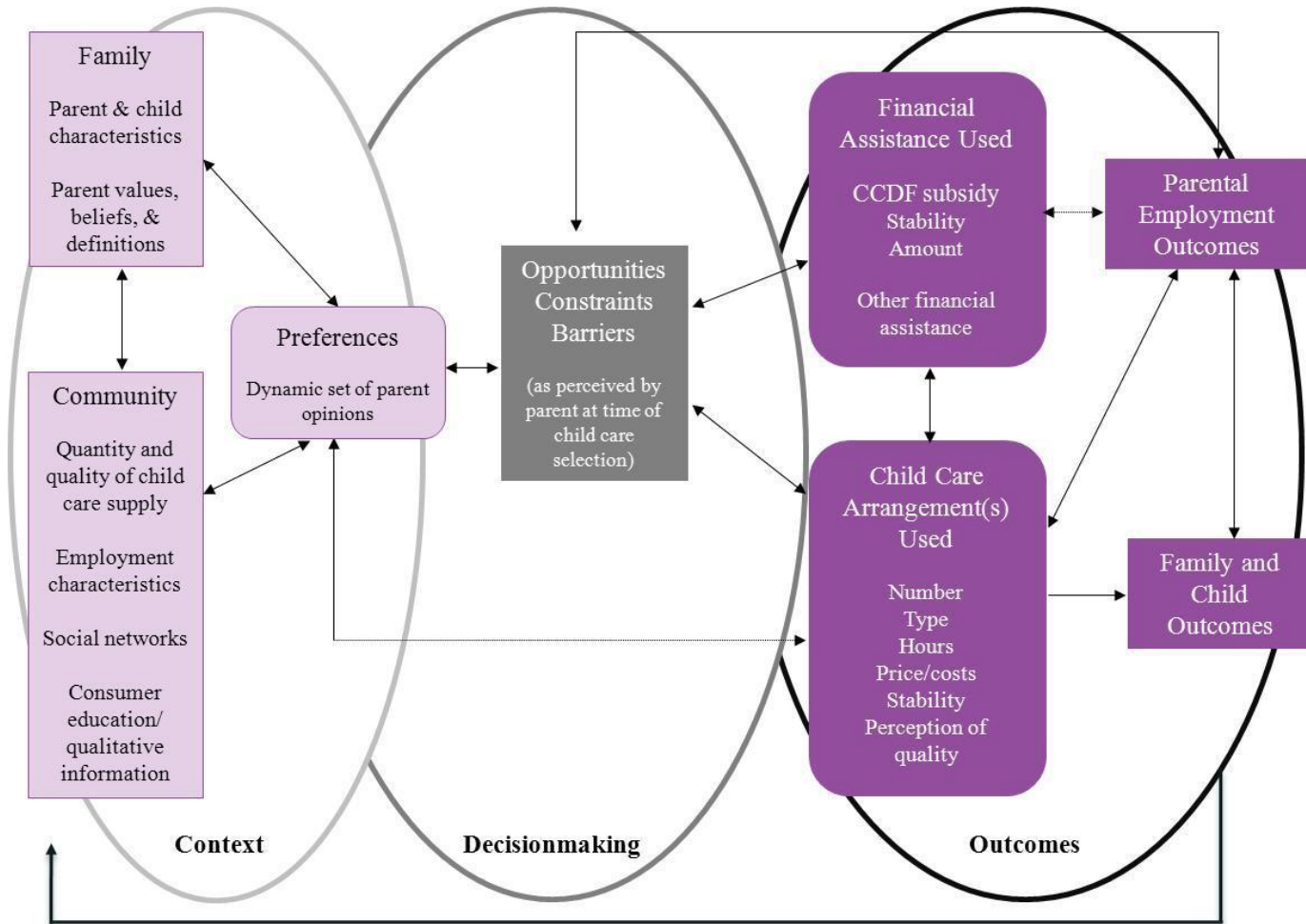
Roughly 1 in 3 of Hispanic children live in poverty



1 in 2 Hispanic children have a foreign-born parent



Motivation for Today's Presentation: Parental Child-care Decision-making



Outcomes become part of context for next child care decision

(Weber, 2011)

Colleen Vesely

- Most relevant research
 - Previous qualitative work (Vesely, 2013; Vesely, Ewaida, & Kearney, 2013)
 - Recent CBPR work (Goodman, Vesely, Letiecq, & Cleaveland, forthcoming)
- Most critical areas of knowledge base
 - Complexity of child care preferences and decision-making processes (Hernandez, Denton, & Macartney, 2011; Weber, 2011; Vesely, 2013)
 - Comparable and unique experiences to other populations (Forry, Tout, Rothenberg, Sandstrom, & Vesely, 2013; Vesely, 2013)
- Implications for a future research/policy
 - Families with infants and toddlers (NCEHS-CCP)
 - Situating child care experiences within the complexity of families' lives



Yoonsook Ha

- Most relevant research
 - Impact of family immigration status on child care choices
 - Patterns of child care subsidy use among Hispanic families
- Most critical areas of knowledge base
 - Choice of care type and associated factors
 - Immigration status and access to resources
- Implications for a future research/policy
 - Contribution of various factors affecting care choices
 - Increased access to publicly funded early care and education programs



Group Discussion

- Family preferences are complex and dynamic: How to balance **complexity**, with **focused approach**?
- **Underutilization** of center-based care: **Exceptions**?
- **Preference for** center-based vs. home-based care?
- **Cultural preferences vs. limitations in access and availability?** Some combination of the two?



Group Discussion

- How does **immigration status** specifically affect child care decision among Hispanic families?
- **Barriers vs. Strengths-based** focus?
- Implications of your research for **programs**:
Need for “**creative measures**”?



Group Discussion

- Implications for your research for **policymakers**: childcare subsidies and CCDF reauthorization? Greatest unknowns?
- The most critical **research gaps**?
- Data “**wish list**”?



Thank You!

Yoonsook Ha, Ph.D.
Assistant Professor
Boston University
yha@bu.edu



Erin Bumgarner, Ph.D.
Senior Research Analyst
Abt Associates
Erin_Bumgarner@abtassoc.com

Colleen Vesely, Ph.D.
Assistant Professor
George Mason University
cvesely@gmu.edu



@NRCHispanic



National Research
Center on Hispanic
Children and Families

Michael López, Ph.D.
Principal Associate
Abt Associates
Michael_Lopez@abtassoc.com

Thank you to our partners!



NEW YORK UNIVERSITY
Institute of **Human Development**
and **Social Change**



COLLEGE OF
EDUCATION



THE UNIVERSITY *of* NORTH CAROLINA
GREENSBORO

Thanks to our Funders!



ADMINISTRATION FOR
CHILDREN & FAMILIES

OPRE